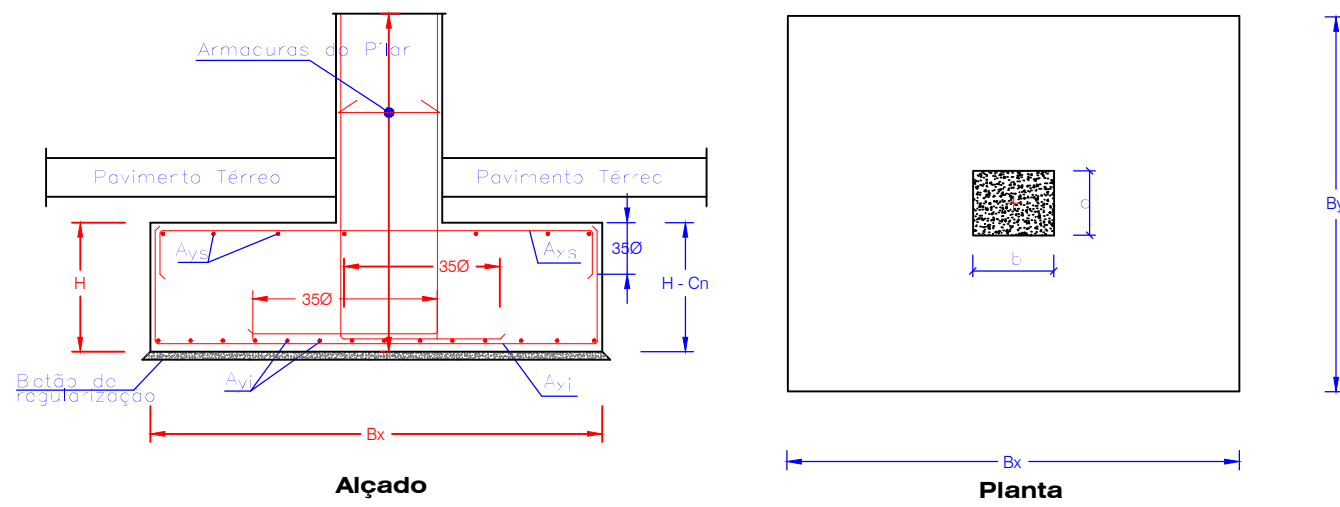
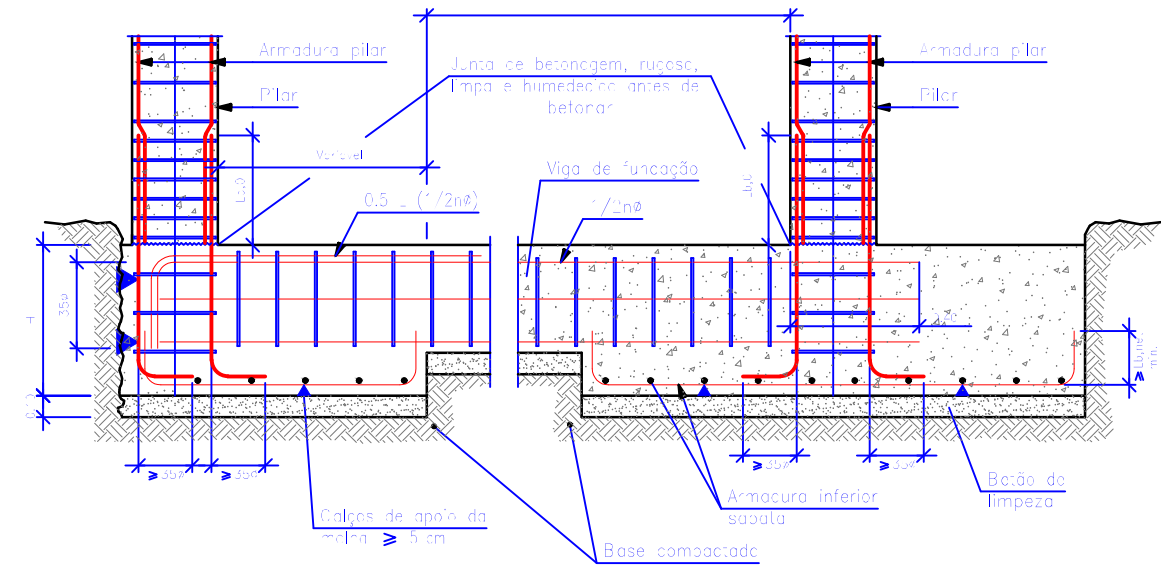


Pormenor Pormenor Sapata isolada



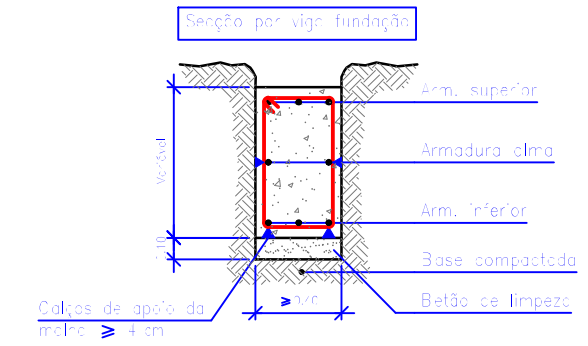
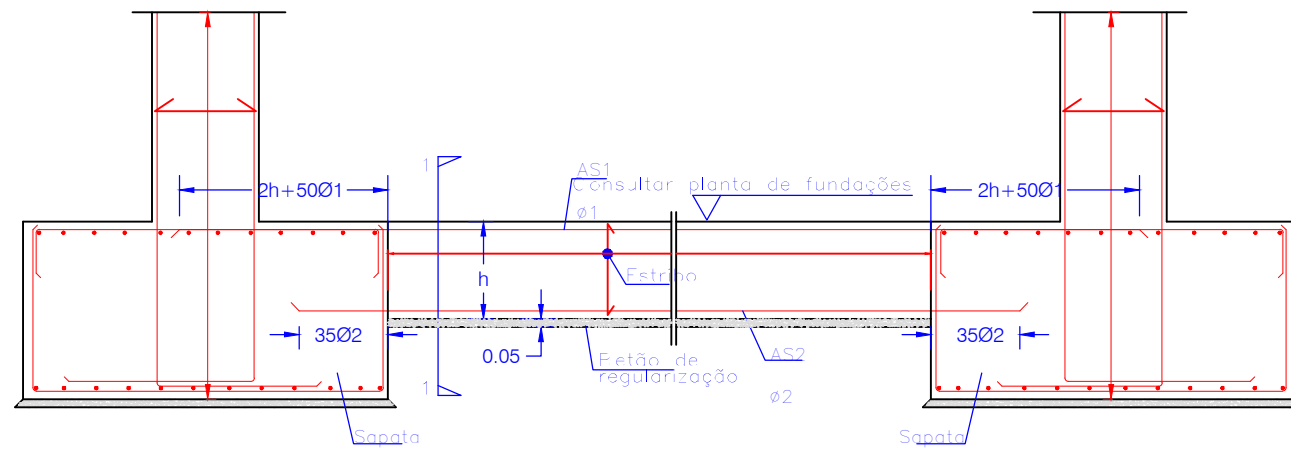
Pormenor sapata excêntrica de ligação com sapata isolada

Betonagem contra o terreno com recobrimento de 80 mm

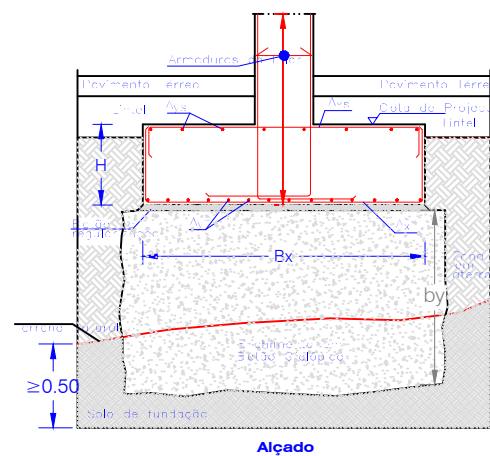


Pelo menos metade de armadura $l/2n\#$ prolonga-se até ao pilar, podendo cortar-se a $0.5l$.

Pormenor Vigas Linteis



Pormenor do enchimento de sapata centrada



Pormenor Laje Pavimento Térreo

