



PLANTA PISO 2



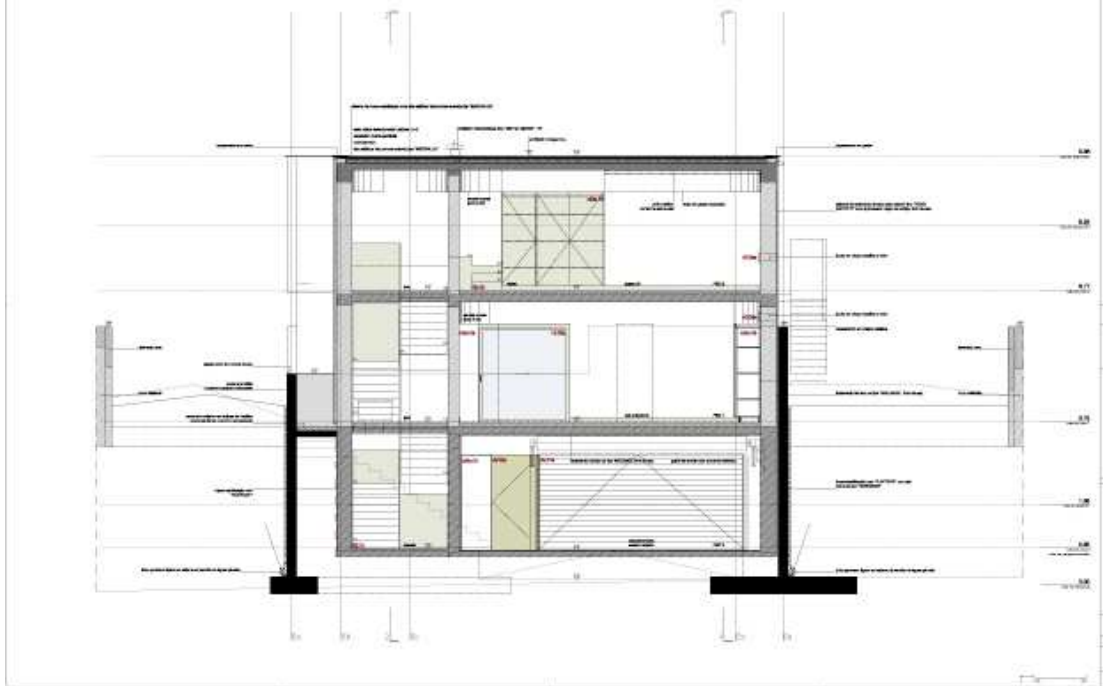
CORTE LONGITUDINAL 1



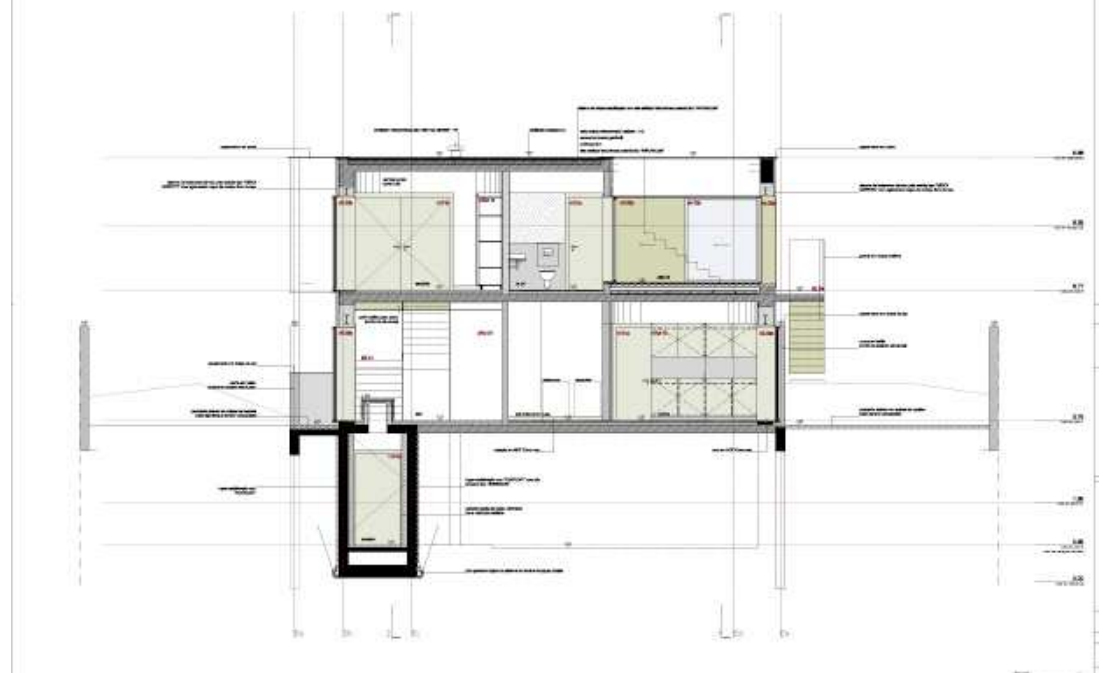
CORTE LONGITUDINAL 2



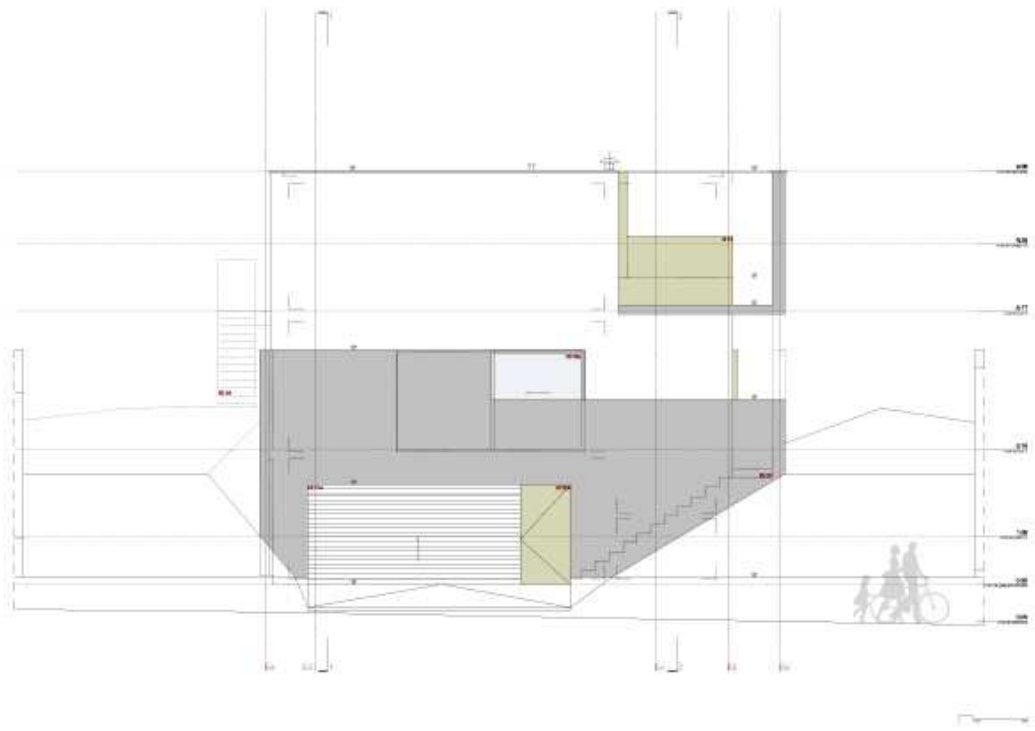
CORTE TRANSVERSAL 3



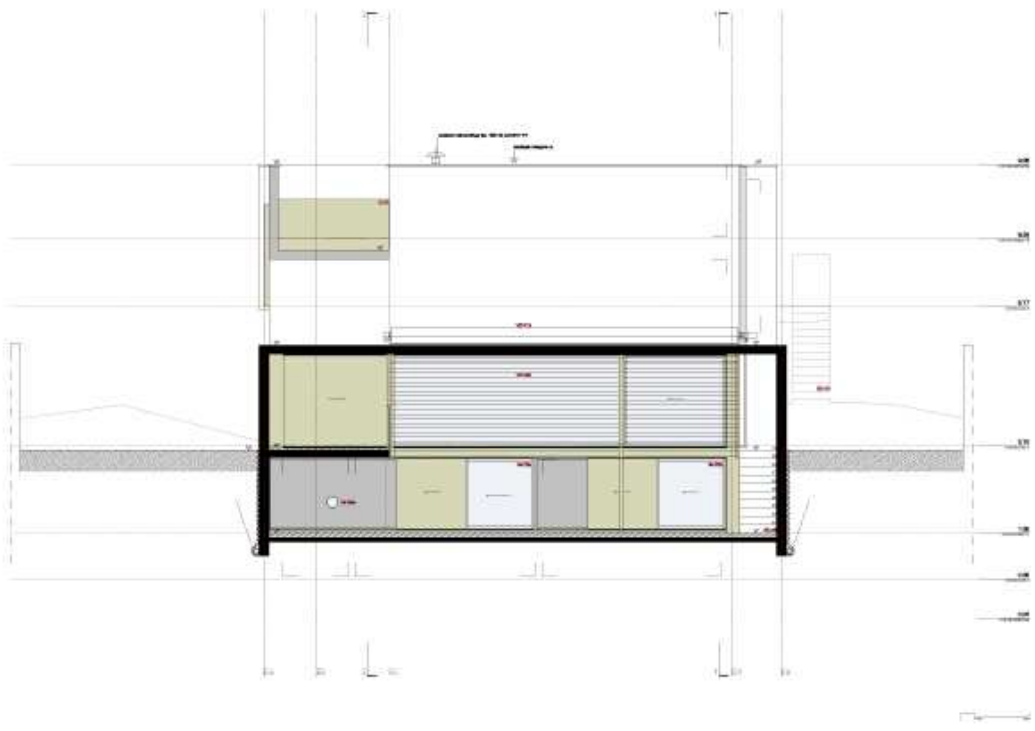
CORTE TRANSVERSAL 4



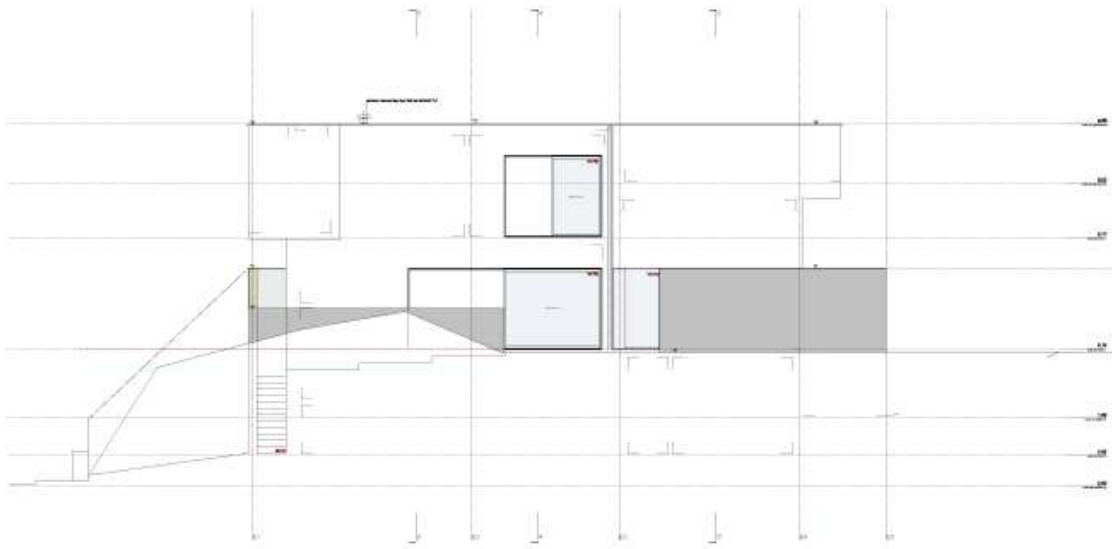
ALÇADO PRINCIPAL / NASCENTE



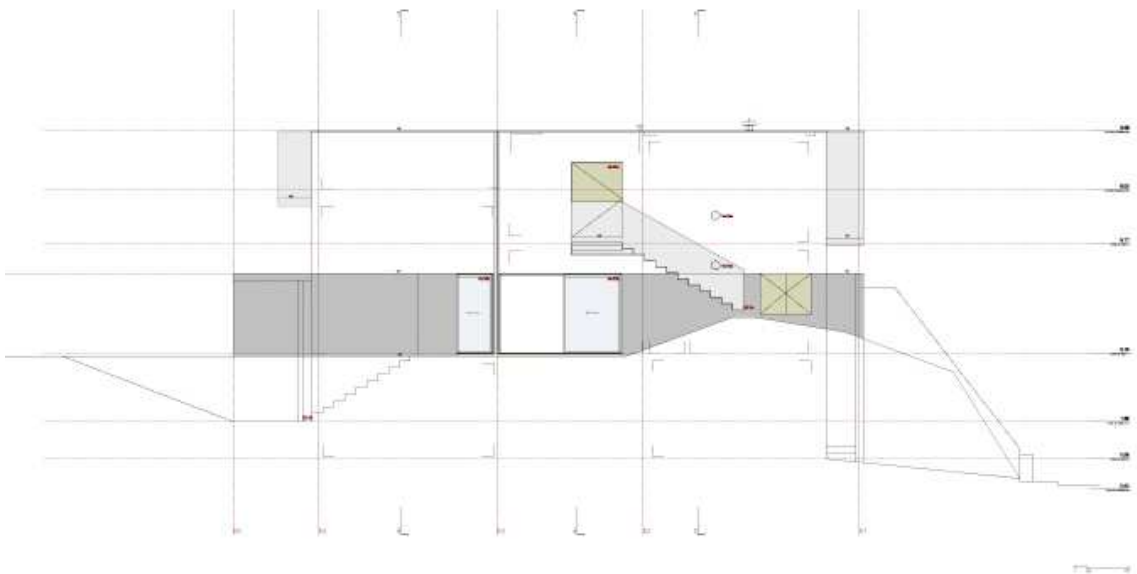
ALÇADO POSTERIOR / POENTE

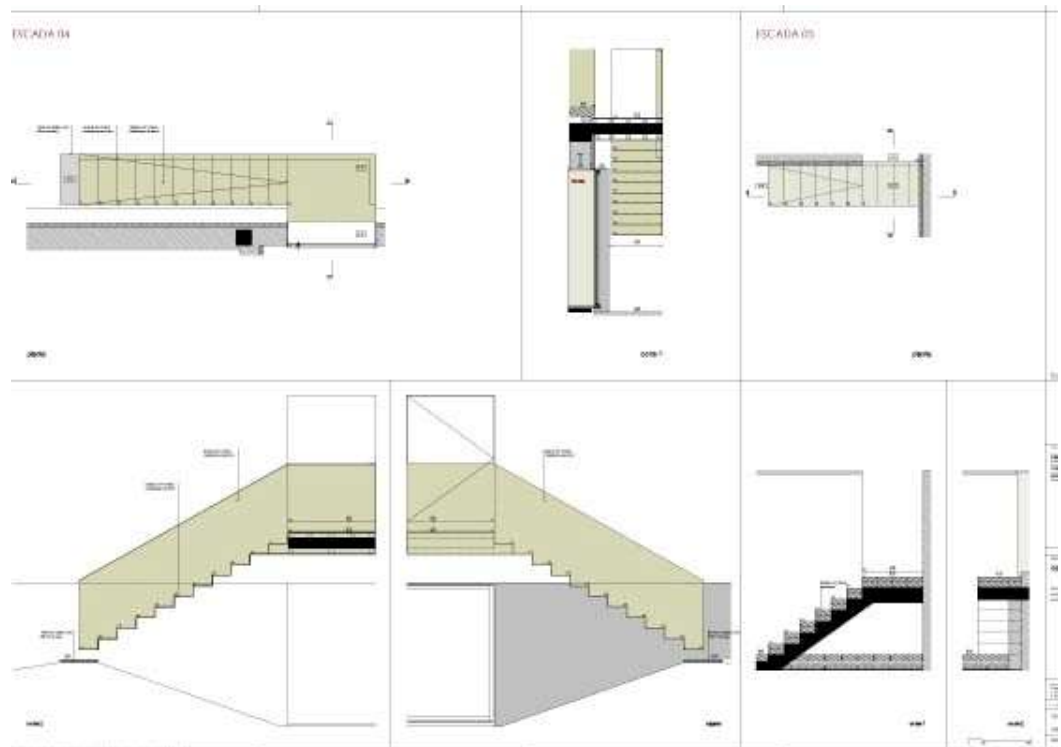
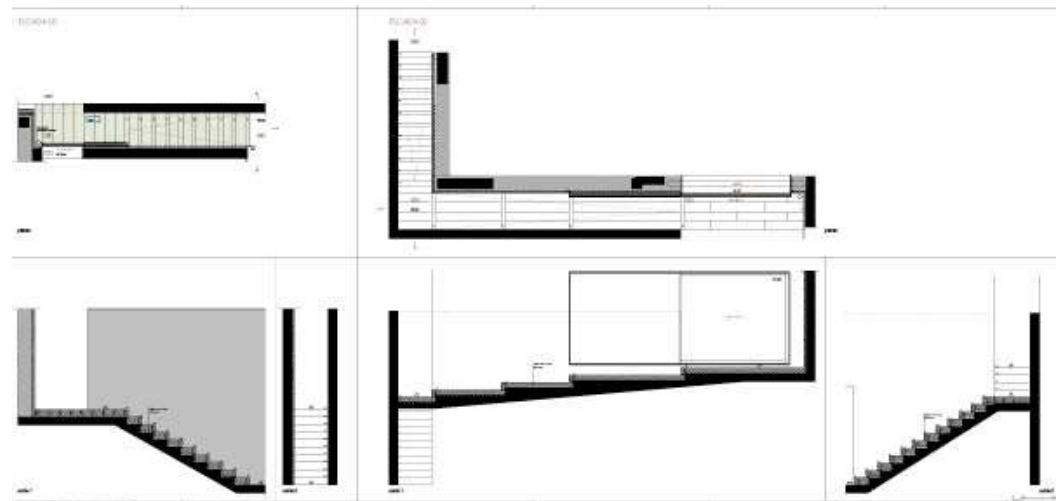
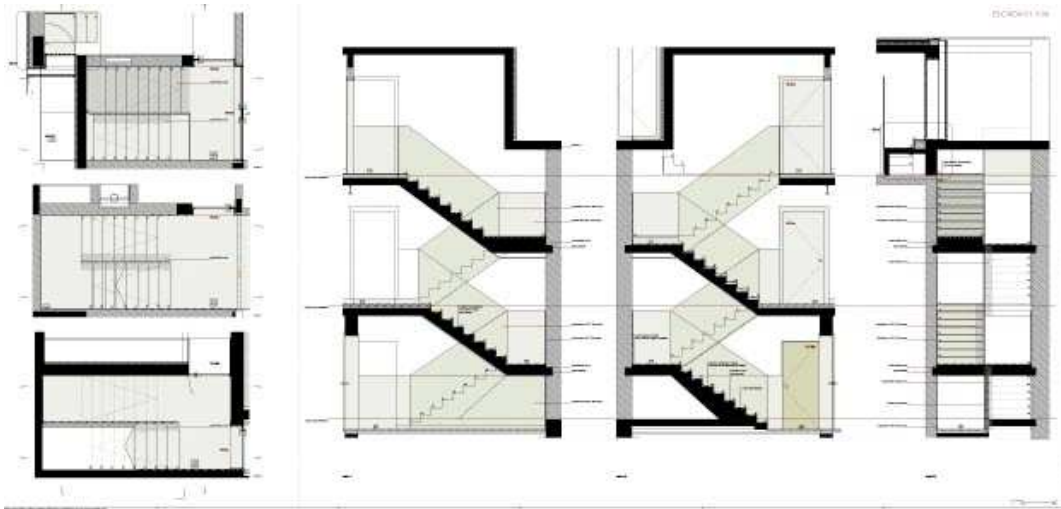


ALÇADO LATERAL / NORTE

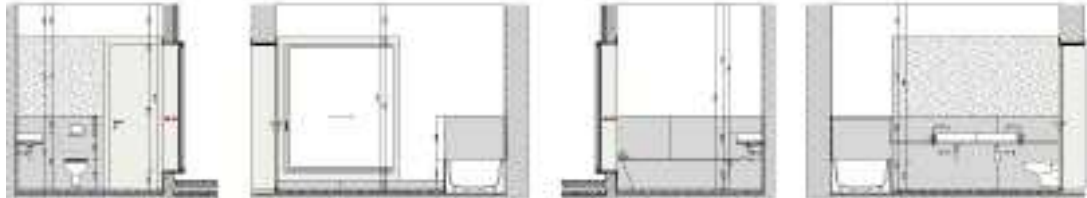
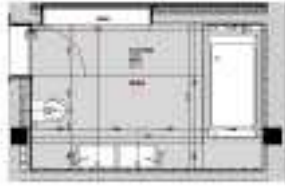


ALÇADO LATERAL / SUL





I.S 04



I.S 08

